



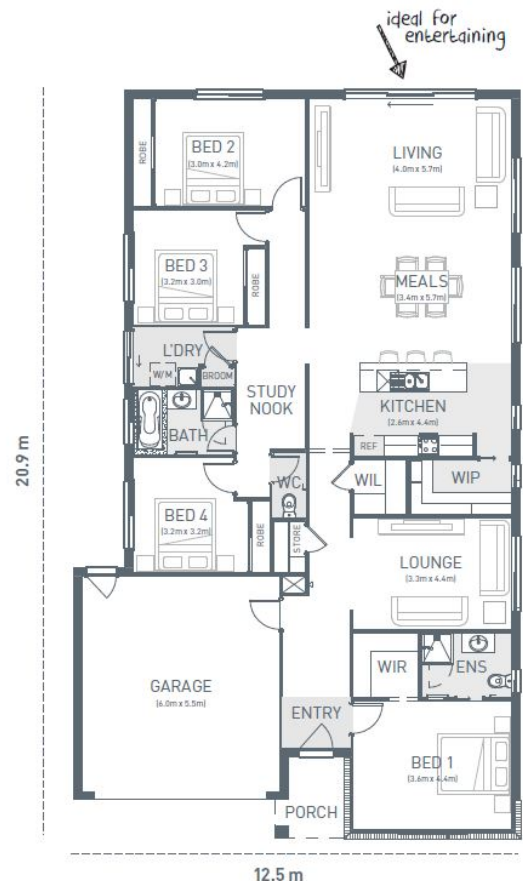
**LOT 8,16 SHEOAK  
COURT  
COLAC**

4  2  2 

LOT SIZE:  
671m<sup>2</sup>

\$680,674

- Double glazed windows & doors
- 2kw solar system
- Colorbond steel roof
- Site cost allowance
- Developer requirements
- Solar Powered System - 6.6KW / Panels



Ash Afshar  
ash@geelonghomes.com.au  
0458 995 652

geelonghomes.com.au  
Good to be HOME



**Lakeside**  
COLAC

Images are for illustrative purposes only and may not represent the final product. Prices are based on availability and price of land. Geelong Homes reserves the right to alter any price or substitute any home without prior notice. All house and land packages are subject to developers final approval. Speak to a new home consultant for more information. [www.geelonghomes.com.au](http://www.geelonghomes.com.au) Images are for illustrative purposes only and may not represent the final product. Prices are based on availability and price of land. Geelong Homes reserves the right to alter any price or substitute any home without prior notice. All house and land packages are subject to developers final approval. Speak to a new home consultant for more information. [www.geelonghomes.com.au](http://www.geelonghomes.com.au)