



HOME AND LAND FROM

\$694,760

LOT 4 SHEOAK COURT

LAKESIDE COLAC

DELTA 25S (LIMITED EDITION) | YALE FACADE

HOME SIZE: 25sq | 233m²

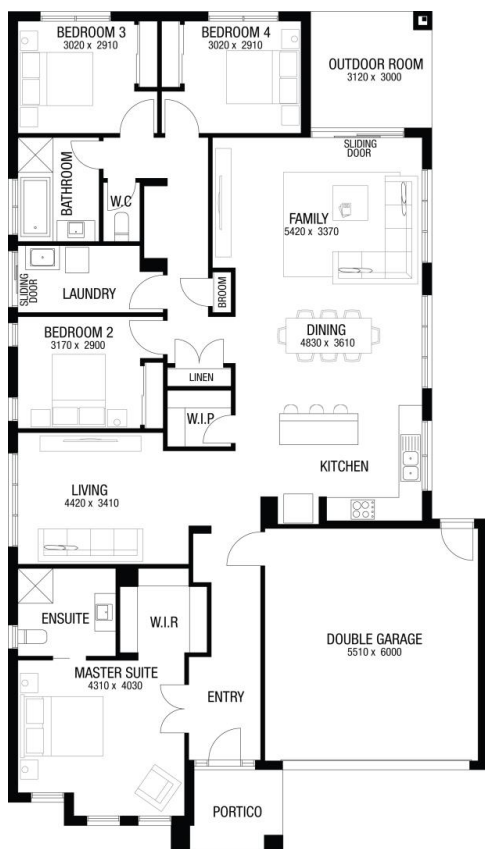
LAND SIZE: 16m WIDE BY 41m DEEP | 671m²

TITLED LAND



BUILT TO OUR BASE SPECIFICATIONS AND LAND, PLUS:

- ✓ 7 star energy rating
- ✓ Site cost allowance
- ✓ Quality tiles to bathrooms, ensuite and laundry
- ✓ Tiled shower base
- ✓ Chrome hand and slide shower rail
- ✓ Stylish stainless steel appliances
- ✓ Garage door remote control
- ✓ Aluminium double glazed windows
- ✓ Eaves to façade
- ✓ Ducted gas heating
- ✓ Lifetime Structural Guarantee#
- ✓ Bushfire Upgrades



PAUL FLETCHER

PAULFLETCHER@METRICON.COM.AU

0449 599 646

LIFETIME

STRUCTURAL GUARANTEE