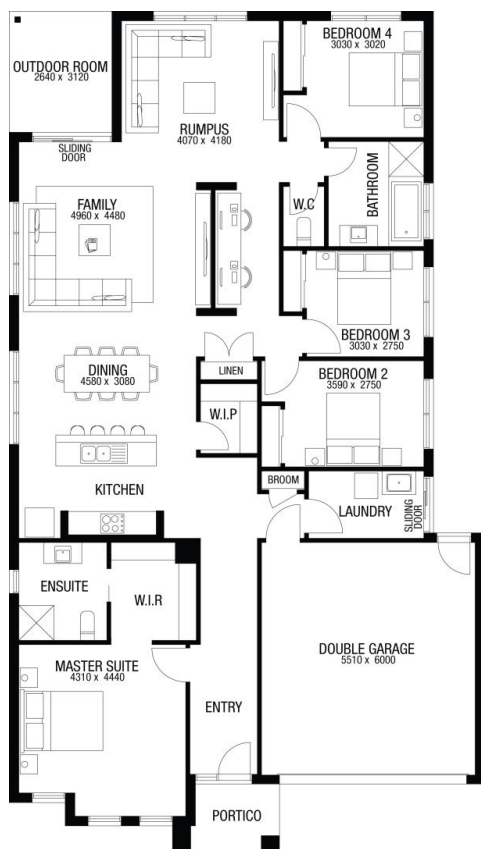




Price excludes upgrade items above standard specification such as feature render and bricks, front entrance timber decking, front entry door, brick infills above garage, external lighting, fencing, concrete paths and driveway. Façade Image may also contain items not supplied by Metricon Homes, namely landscaping and planter boxes.



## HOME AND LAND FROM

# \$648,500

### LOT 9 SHEOAK COURT

LAKESIDE COLAC

### ARCADIA 25 (LIMITED EDITION) | EDISON FACADE

HOME SIZE: 25sq | 225m<sup>2</sup>

LAND SIZE: 14m WIDE BY 41m DEEP | 587m<sup>2</sup>

TITLED LAND



BUILT TO OUR BASE SPECIFICATIONS AND LAND, PLUS:

- ✓ 7 star energy rating
- ✓ Site cost allowance
- ✓ Quality tiles to bathrooms, ensuite and laundry
- ✓ Tiled shower base
- ✓ Chrome hand and slide shower rail
- ✓ Stylish stainless steel appliances
- ✓ Garage door remote control
- ✓ Aluminium double glazed windows
- ✓ Eaves to façade
- ✓ Ducted gas heating
- ✓ Lifetime Structural Guarantee#
- ✓ Bushfire Upgrades

### PAUL FLETCHER

PAULFLETCHER@METRICON.COM.AU  
0449 599 646

## LIFETIME

STRUCTURAL GUARANTEE