

FIXED PRICE

House & Land Package

SIMONDS



IRONBARK 37 | ELEVATE RANGE

FIXED PRICE
GUARANTEE

Reflections

UP TO
\$60K
OFF*

STRUCTURAL
LIFETIME
GUARANTEE

\$902,858*

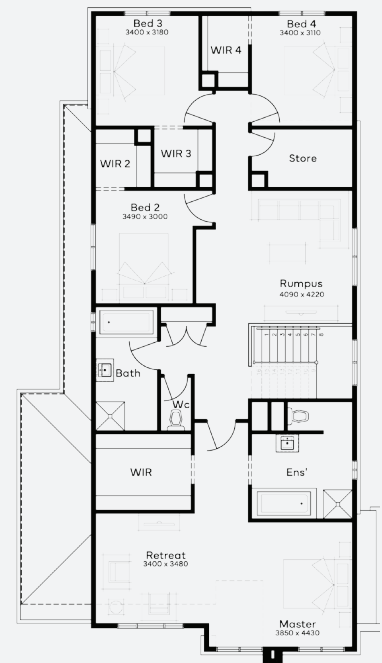
Lot 44, COLAC Lakeside
Estate (771m²)



FIRST HOME OWNERS - \$892,858

INCLUSIONS

- + Fixed price Site Costs
- + Developer & council requirements
- + 920mm wide feature entry door
- + 20 LED downlights to 20 additional light points
- + Tiled niche to Master ensuite shower compartment
- + Clark Monaco double bowl overmount stainless steel sink
- + Ducted Heating and Choice of Ducted Evaporative Cooling or Split Systems to family and master + driveway
- + Plus much more!



For enquiries please contact: **Bruno Esposti - 0435219103**

simonds.com.au

All Fixed Price House and Land packages are subject to approval by the Developer and Council. These packages are based on Simonds' standard floor plan with preferred siting and without any alterations. The Package Price does not include stamp duty, government charges, legal fees, or bank charges. Additional costs, including a Community Infrastructure Levy and Asset Protection Permit, are not included in the package pricing. Any alterations to the standard floor plan may result in additional charges. The land price, for the land being the subject of the Fixed Price House and Land package, and its availability must be confirmed by Simonds prior to making a purchase. Simonds reserves the right to withdraw or amend the pricing, inclusions, and promotions for the Fixed Price House and Land package at any time without prior notice. Terms and conditions apply, for more information, please refer to our terms and conditions at www.simonds.com.au/terms-and-conditions. This package is applicable to the VIC - Elevate range only. Images shown are for illustrative purposes only and may not represent the final product such as lighting, window furnishings, timber look garage door & timber windows. Façade details including entry door and window sizing may vary between house types. Pricing also excludes features such as fencing, landscaping, letterbox, decking, driveway and any notable features of the façade. For further details, please consult with your sales representative. Pricing is current as of 05/12/2025 and is subject to change. Terms and Conditions Apply. Refer to Lakeside, Colac website for details: www.lakesidecolac.com.au

