



**Lakeside Estate**  
 Mc Gonigal Street, Colac  
 Lot 55

**Facade:** Manchester

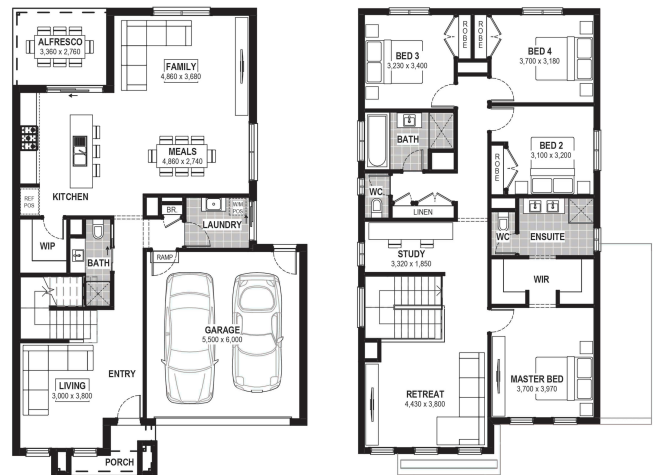
**House:** 30.38 sq **Land:** 740 m2

4  
 3  
 3  
 2

## Rathdowne 30

### Inclusions

- Truecore Steel House Frame
- Colorbond Steel Roof (with Sarking)
- High Performance Double Glazed Windows & Doors
- 8 Star Energy Efficient
- 7 x 440w Panels & 3KW Inverter (single phase)
- Bushfire Compliance to BAL 12.5
- 900mm Appliances
- 50 Year Structural Guarantee
- 900mm Rangehood & Upright Cooker
- Overhead Cupboards to Kitchen
- 2550mm Ceiling Height
- Caesarstone Benchtops to Kitchen & Vanities
- Developer Guidelines Included
- Laminate Flooring & Carpet Throughout
- NBN Fibre Package
- Site Costs Allowance Included



GROUND FLOOR

FIRST FLOOR

### Contact:

Christian Keepen

0437 853 822

houseandland@jgking.com.au

\*Conditions apply, speak to your New Home Advisor for future details. Not all house and land packages are created as standard or on blocks that are optimally orientated and therefore JG King Homes cannot guarantee that it will achieve an 8 star NatHERS performance rating. Please talk with your new home advisor to see whether this package is classified as standard and optimally orientated in order to achieve an 8-star rating at no additional cost.